

# Montage de la suspension Camion Pompier



## Firetruck Ceiling Light assembly instructions



Pour ce luminaire, nous vous recommandons une ampoule E27 de type LED (20W max)  
For this light, we recommend an E27 bulb type LED (20W max)

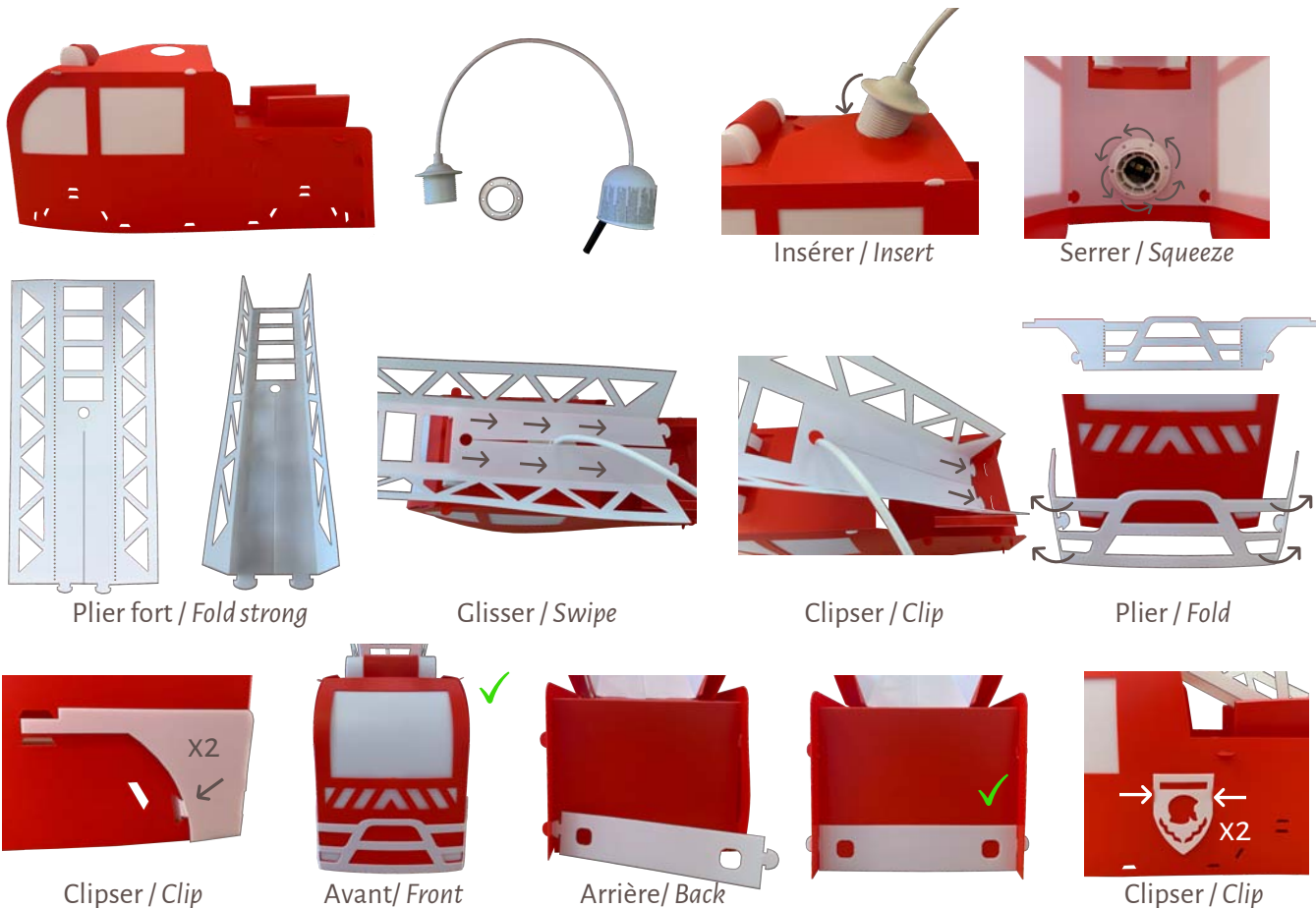
### 1ère étape: le montage de la structure du Camion

### 1st step: Assembly instructions of the truck's structure



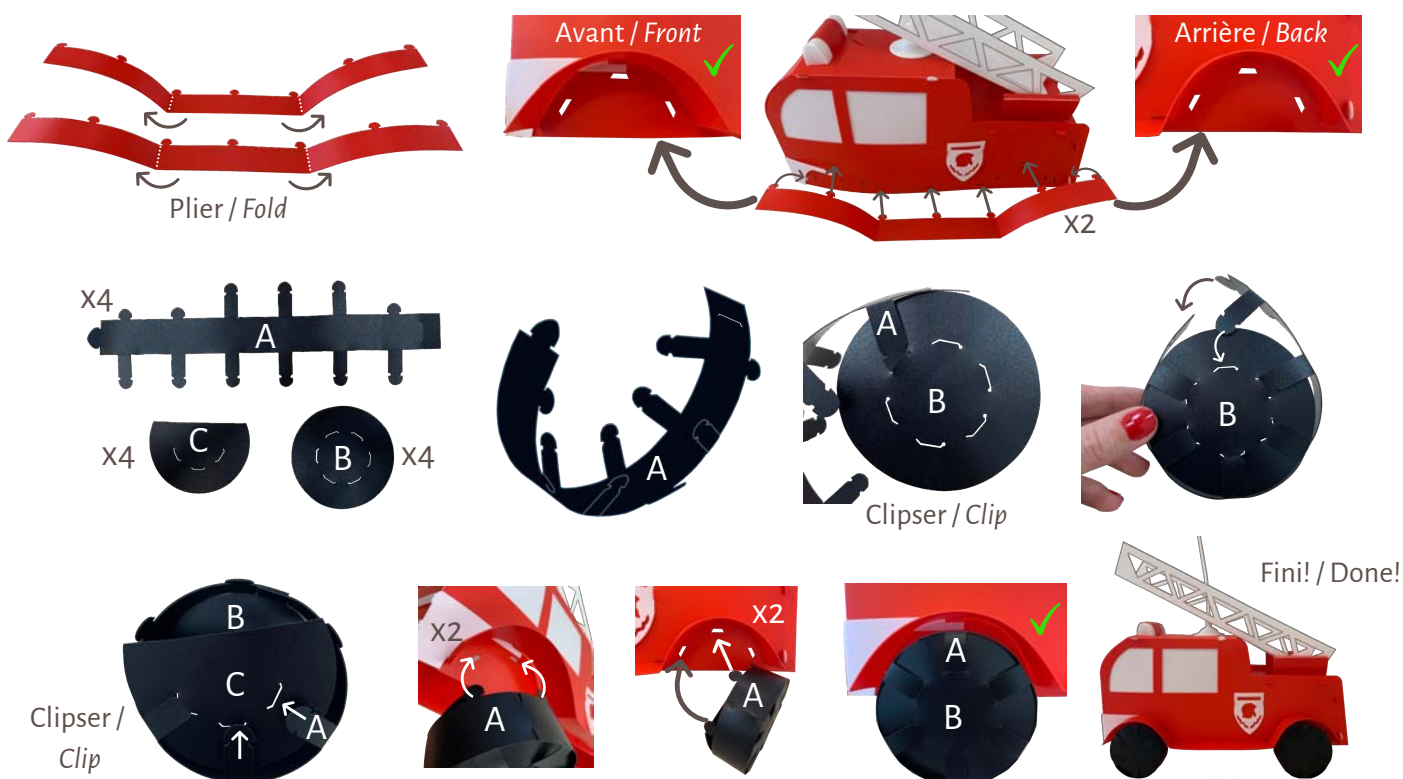
## 2ème étape: le montage de l'échelle et des pare-chocs

### 2nd step: Assembly instructions of the ladder and bumpers



## 3ème étape: le montage des roues

### 3rd step: Assembly instructions of the wheels



**FABRICATION FRANCAISE / MADE IN FRANCE**

LUMINAIRE DE CLASSE 2 - 230 VOLTS - 20 WATTS MAXIMUM - CONFORME A LA NORME EN-60598-1 ET EN-60598-2-1  
LUMINARY OF CLASS 2 - 230 VOLTS - 20 WATTS MAXIMUM - COMPLIANT TO THE STANDARD EN-60598-1 AND EN-60598-2-1